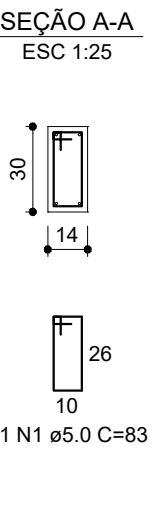
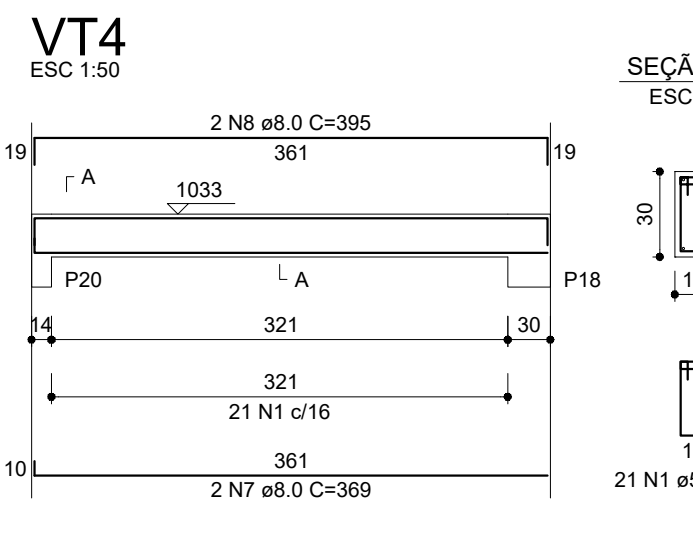
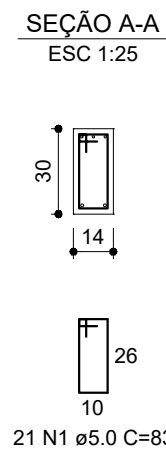
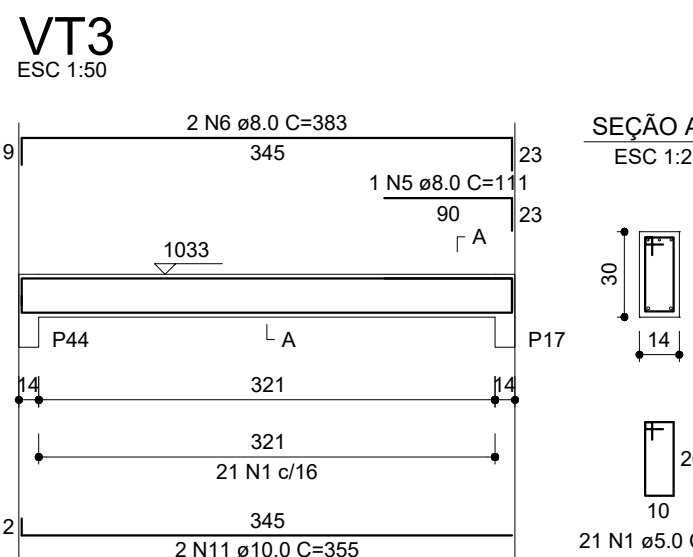
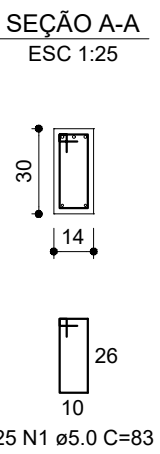
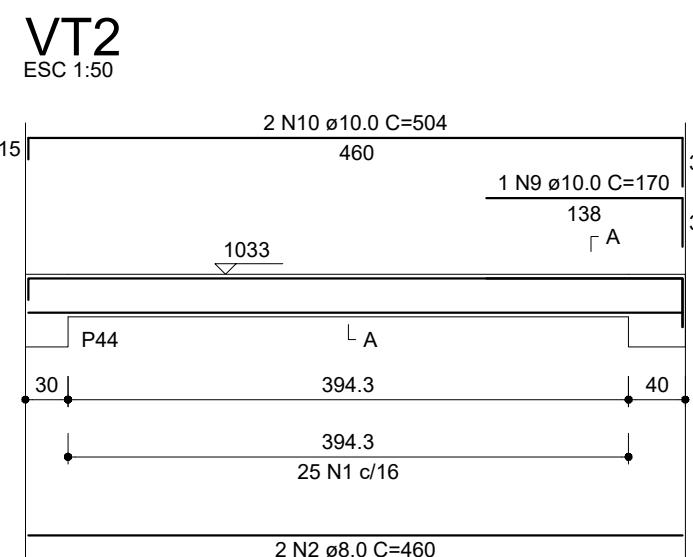
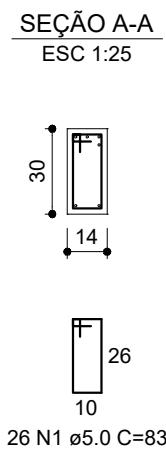
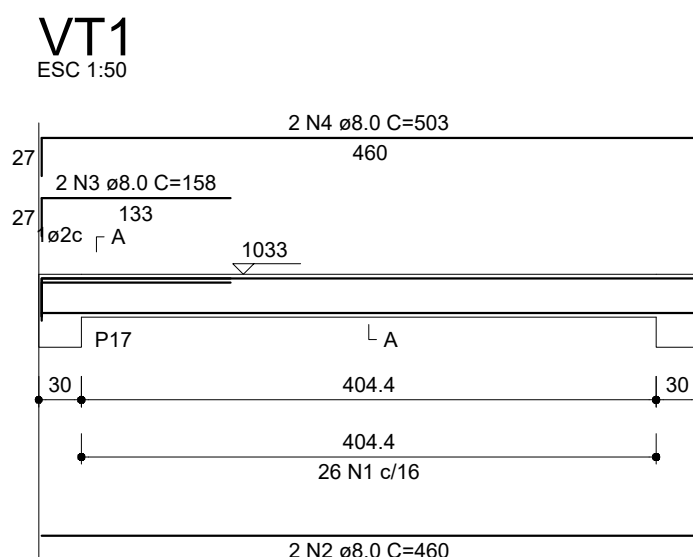


Vigas			
Nome	Seção (cm)	Elevação (cm)	Nível (cm)
VT1	14x30	0	1033
VT2	14x30	0	1033
VT3	14x30	0	1033
VT4	14x30	0	1033

Características dos materiais	
f <sub>ck</sub> (kgf/cm <sup>2</sup> )	E <sub>s</sub> (kgf/cm <sup>2</sup> )
250	241500

Forma do pavimento ÁTICO (Nível 1033)  
escala 1:50



RELAÇÃO DO AÇO					
AÇO	N	DIAM (mm)	QUANT	C.UNIT (cm)	C.TOTAL (cm)
CA60	1	5.0	93	83	7719
CA50	2	8.0	4	460	1840
	3	8.0	2	158	316
	4	8.0	2	503	1006
	5	8.0	1	111	111
	6	8.0	2	383	766
	7	8.0	2	369	738
	8	8.0	2	395	790
	9	10.0	1	170	170
	10	10.0	2	504	1008
	11	10.0	2	355	710

RESUMO DO AÇO			
AÇO	DIAM (mm)	C.TOTAL (m)	PESO + 10% (kg)
CA50	8.0	55.7	24.2
CA60	10.0	18.9	12.8
	5.0	77.2	13.1
PESO TOTAL (kg)			
CA50	37		
CA60	13.1		

Volume de concreto (C-25) = 0.69 m³  
Área de forma = 12.16 m²



**O2ENGENHARIA**

RUA JOAQUIM VILAS BOAS DOS REIS, 45  
CENTRO - NATÉRCIA - MG  
(35) 9 9936-7680  
(35) 9 9814-5183  
(35) 9 9904-8122  
atendimento.o2engenharia@gmail.com

PROJETO COMPLETO  
ESTRUTURAL

PROPRIETÁRIO  
CÂMARA MUNICIPAL DE ITAPEVA  
CNPJ: 19.053.594/0001-27  
ENDEREÇO:  
RUA PRESIDENTE KENNEDY, S/N - LOT. JARDIM MONTEIRO  
ITAPEVA - MG

DETALHES

FORMA E VIGA DO ÁTICO

PROPRIETÁRIO  
CÁSSIO CÉSAR ORSI JUNHO  
CREA: 102036/D - MG

ESCALA:  
INDICADA  
DATA:  
08/10/2021  
FOLHA:  
10/15

ESTRUTURAL